



Lageplan Unterstadt



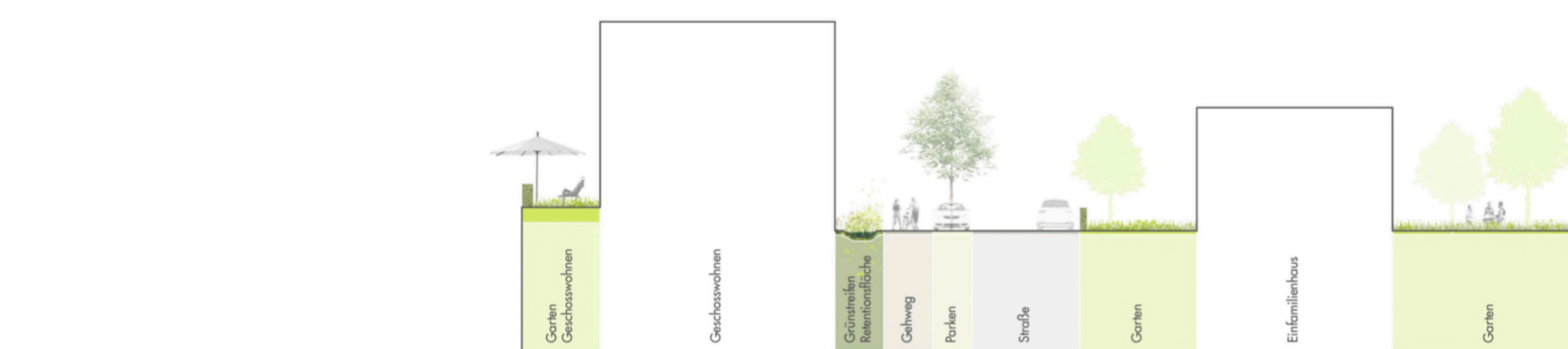
Perspektive



Lageplan Oberstadt



Regelgeschoss



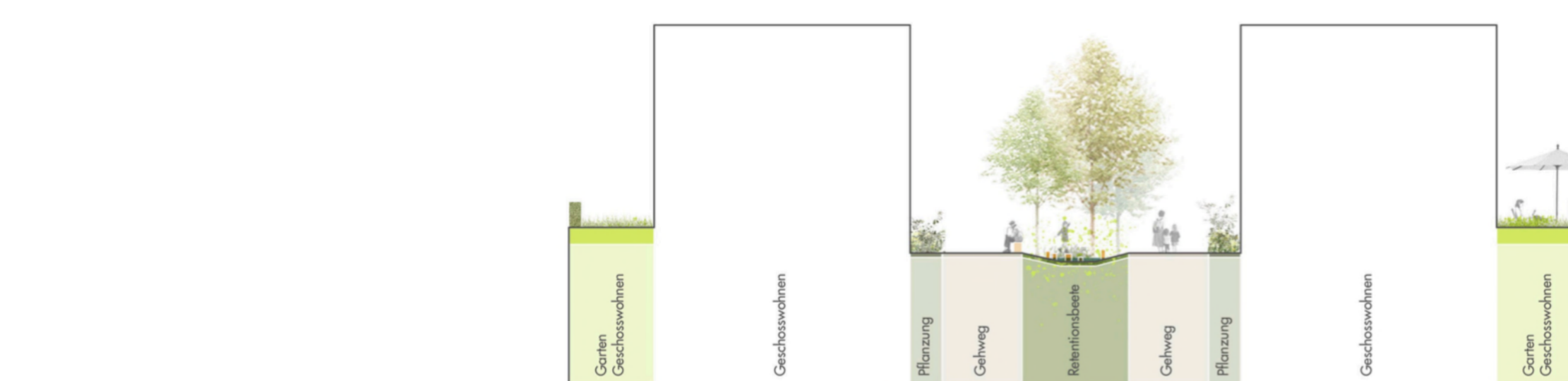
Straßenquerschnitt - Haupteerschließung



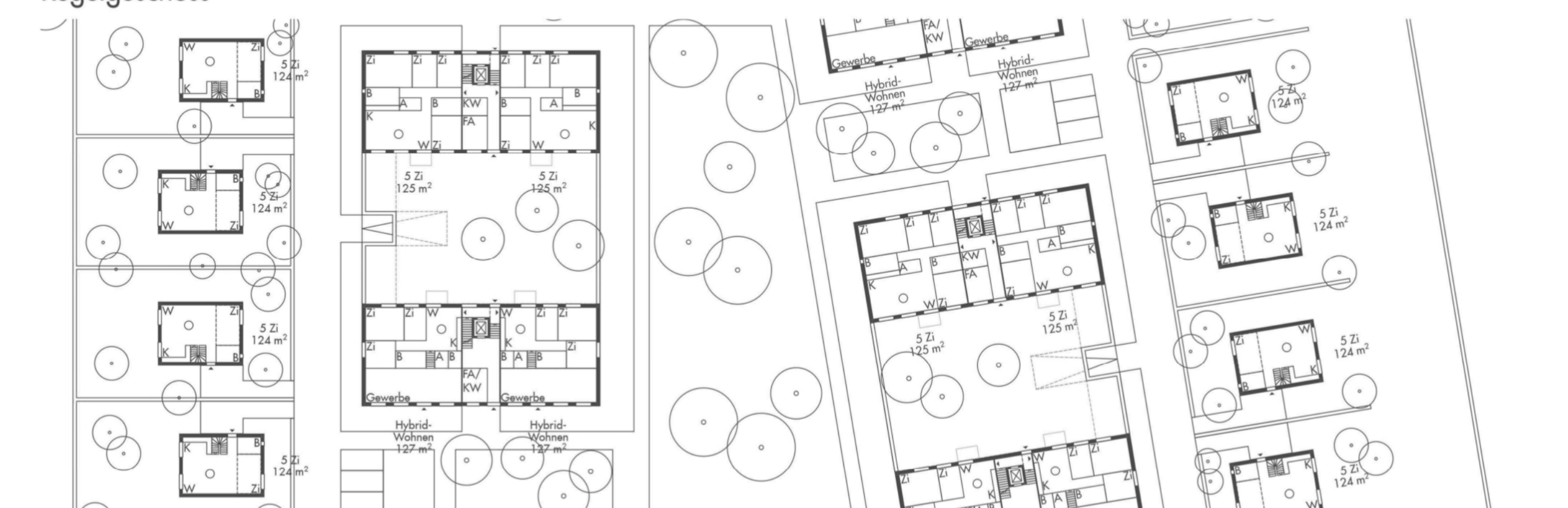
Regelgeschoss



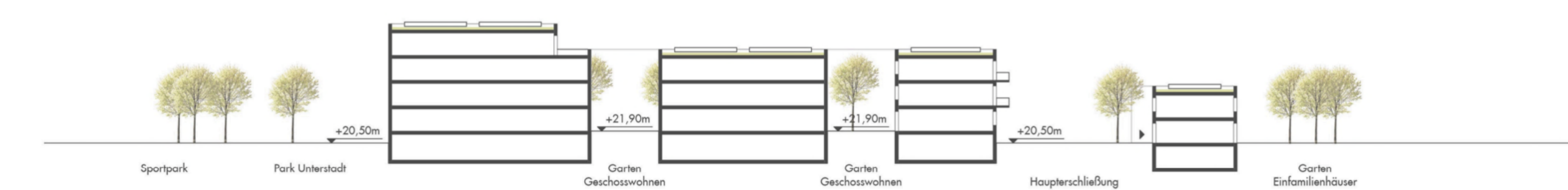
Erdgeschoss



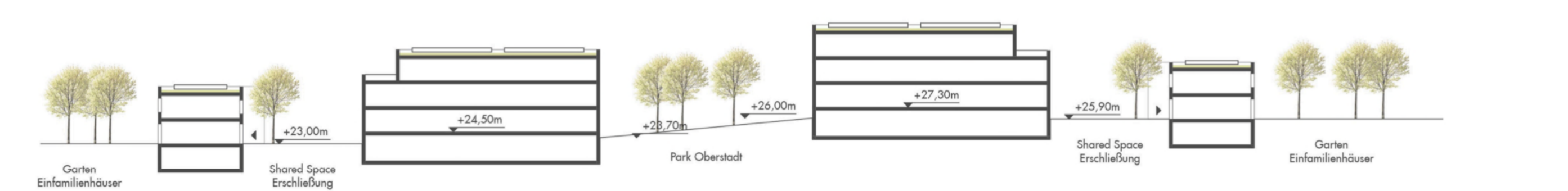
Straßenquerschnitt - Nebeneerschließung



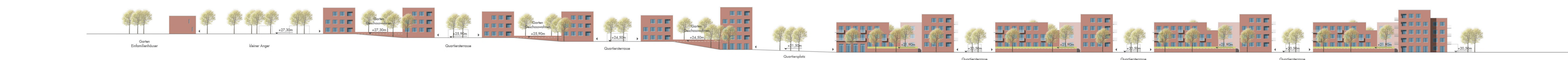
Erdgeschoss



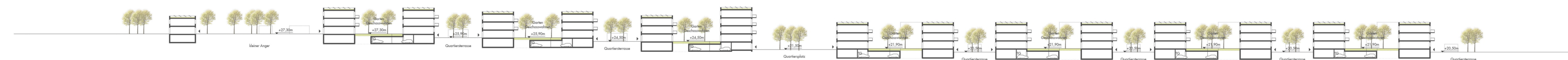
Schnitt A - A



Schnitt B - B



Parkansicht West



Schnitt C - C